



# Goodwill

Industries of Tulsa, Inc.

## Geneva's Dream Pays Off

**G**eneva came to Goodwill with the dream of improving her life by getting help to find a career that would support her. She had some difficulties standing in her way, such as coming from an economically disadvantaged background, dealing with depression since she was a teenager and chronic back pain that lingered from an injury. Still, Geneva held on to her dream and sought help from Goodwill's TulsaWORKS program.



Geneva had completed a medical assistant certification and had training in phlebotomy.

Her TulsaWORKS case manager suggested that she make contact with the Oklahoma Department of Rehabilitation Services for assistance with her back pain and other training. She followed through with this suggestion and was making plans to take her certification exam.

Then Geneva discovered that she was pregnant. Her goals were put on hold for a while until her son, Cayman, was born. Then her dreams for a better life took on even more meaning.

Geneva took a refresher course so that she was updated in phlebotomy. Then she returned to Goodwill. This time she took advantage of Goodwill's Supported Employment program. This program offers an employment consultant to assist in finding just the right job for a person's skill set and then assists in the transition on the job site. Geneva needed a job in the medical field that was on the bus routes and operates within the constraints of the bus schedule. Together Geneva and Goodwill's employment consultant found a job that was a perfect fit. Geneva was hired by OMNI Medical Group at St. John Medical Center as a Patient Care Assistant.

Once Geneva secured the job, the employment consultant assisted her with problem solving work-related issues, such as child care and making a back-up child care plan. Working and balancing this with the needs of her child, Geneva has taken important steps toward improving the quality of life for both herself and her infant son.

## Michael Becomes Part of the Team

**M**ichael Tecumseh began working at Goodwill's Kenosha donation site in Broken Arrow in July 2009. This was a big step forward for a young man who is shy and quiet and has a developmental disability. One of the employment opportunities offered by Goodwill to assist persons with disabilities is a job share situation. Two or three individuals work together at the donation site, supervised by a job coach. This group forms the donation team, each bringing something to the mix.

One of the most important functions of donation site employees is to provide exceptional customer service to the public who graciously donates clothing and other items to Goodwill. The job coach instructs each supported worker about



the proper ways to greet and thank our generous donors.

When Michael first began, he was unsure of his place in his job. He was especially shy about greeting donors when they arrived.

[SEE MICHAEL PAGE 3](#)

### IN THIS ISSUE

Go Green! **3**



A New Home **3**

**4**

There's A Way



**BOARD OF  
DIRECTORS  
OFFICERS**

**Chairman of the  
Board**  
Ronny Altman

**Vice Chairman**  
Tammie Maloney

**Secretary/Treasurer**  
Jerry Scherer

**President**  
David E. Oliver

**Directors**  
Page Bachman  
James R. Beasley  
Chris Bengé  
Steven R. Berlin  
James R. Beverley III  
Terry D. Blain  
Jim Bush  
Nicholas E. Fitzgerald  
John Goodwin  
Linda Gunnells  
Rudy Herrmann  
Donald M. Himelfarb  
Sam Joyner  
Debra McIntosh  
Steve Mackey  
Steve Penrose  
Ron Peters  
Paul Rossler  
John Shearing  
Clark Southmayd, Jr.  
Bernard Tomlin  
R. Charles Wilkin, III  
John R. Woodward, III  
Paul J. Woodul

**Honorary  
Directors**  
Alan W. Carlton  
J. Patrick Cremin  
Lee H. Davis  
J. Michael Geer  
Bob Haring  
Brian Hunt  
Vernon T. Jones  
David G. Murray  
A. B. Steen  
Leroy Thomas, Sr.  
Jack Zarrow



**Thoughts  
from David**

Every organization must have an economic engine that provides the resources that allow it to support the programs that they offer. At Goodwill Industries that economic engine is our Donated Goods Program. But it is the generosity of our community that provides the fuel that drives our economic engine. During 2009

your donations of clothing and household items were turned into revenue that allowed Goodwill to:

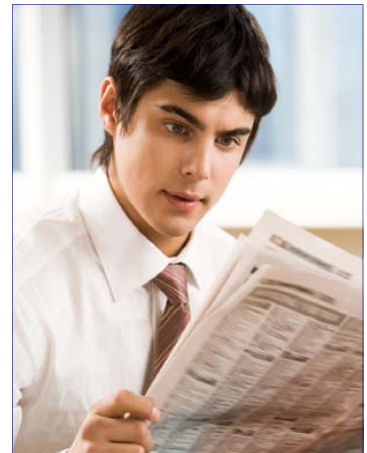
- Employ nearly 600 individuals with disabilities and other employment barriers who earned wages and benefits in excess of \$7.2 million.
- Provide job training and support services to more than 1,300 individuals with employment barriers.
- Provide job placement services that resulted in 337 individuals with employment barriers being placed into jobs in the community. These individuals earned more than \$2.3 million during 2009.

Without your support these achievements would not be possible. However, sometimes Mother Nature has a say in things. The large ice and snow storm that we experienced in late December had a significant negative impact on the volume of donations that we received at year end, a time that is normally one of our busiest of the year. And as if that weren't enough, we have continued to experience multiple ice and snow events in January and February resulting in reduced donations of clothing and household items. All of this at a time when we are seeing record numbers of people coming through Goodwill's doors for jobs and job training.

What I would like to ask is that you please set aside a small portion of time to clean the clothing and household items you no longer need out of your closets and donate them to Goodwill. I can assure you that Goodwill will then turn those donations into jobs, job training, work opportunities and hope for people with employment barriers that want to work but need the services provided by Goodwill to become successfully employed. A few minutes of your time today is all it takes. Thank you again for providing the support that fuels Goodwill.

**LOOKING FOR A JOB OR MAKING  
A CAREER CHANGE?  
LET US HELP!**

**GOODWILL**  
**JOB CONNECTION**



**Services Provided:**

Interest & Skills Assessment \* Career Options  
Resume Development \* Internet Job Search \* Job Leads  
Practice Interview Skills \* Networking  
Referral To Community Resources

**NOW OPEN!**



2800 Southwest Blvd. / Tulsa, Oklahoma 74107  
(918) 599-0067 email: [jobs@goodwilltulsa.org](mailto:jobs@goodwilltulsa.org)  
[www.goodwilltulsa.org](http://www.goodwilltulsa.org)

# RedFork Main Street Finds New Home At Goodwill

RedFork Main Street, (RFMS) a not-for-profit organization, established in 2007 to prevent and reverse community deterioration in southwest Tulsa by educating people on the value of protecting and enhancing Southwest Tulsa's rich historic and culturally significant areas, has recently taken up residence at Goodwill Industries of Tulsa's main facility on Southwest Boulevard.



Prior to the move the organization resided at Red Fork Crossing, a mile from Goodwill on Southwest Blvd. Red Fork Crossing is home to the Scissortail Group and the Tulsa County News. As all good things must come

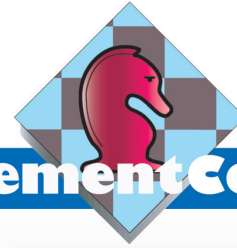
to an end the three businesses soon outgrew the facility. Goodwill Industries of Tulsa, a major supporter of the organization since its inception in 2007, offered office space to the organization. Permanent offices are planned for the organization in the Southwest Tulsa Chamber House. Currently the house is under renovation and expects to open late 2010 or early 2011. The Chamber House will be home to the Southwest Tulsa Chamber, Southwest Historical Society and RedFork Main Street.

MICHAEL, CONTINUED FROM PAGE 1

Seeing this as an opportunity to teach teamwork, the job coach arranged it so that he and the other co-workers included Michael and handled the greeting of the donors as a group. They role modeled the action, allowing Michael to become more comfortable with his job duties.

Soon he was no longer the last to be out the door to greet donors. At first his greeting consisted of a shy smile and patiently waiting to help carry donations. Michael now does not depend on the job coach to remind him to greet the donor as he once did. When a vehicle pulls in and his co-workers move toward the door, Michael goes with the team.

Recently the job coach witnessed Michael respond to a donor independently. Standing slightly back, the job coach wanted to see the level of independence Michael would display. Michael did not show any sign of reluctance in performing the task and tended to the donor completely. His co-workers were busy sorting other donations, and the job coach told them to continue, stating "Michael's got this one". Goodwill is proud of the efforts of Michael and his team.



## Placement Corner

The Placement Corner highlights the wide range of jobs and occupations in which our training graduates are now employed.

Participant's Name	Employer	Position
Geneva Walker	St. John Medical Center	Patient Care Assistant
Christina Cantrell	K-Mart	Store Clerk
Tina Garner	IPSCO	Machinist
Tom Young	TIG Enterprises	Printer Helper
Martha Cruz	Union Public Schools	Custodian
Kamakia Kiel	American Income	Sales
Kenneth Thomas	Force Protection Services	Security
Priest Choctaw	Green Star Recycling	Forklift Driver
Melinda Baker	Gannett Center of Excellence	Cust. Service Rep.
William Scott	Tulsa Juvenile Detention Cnt.	Detention Officer

## Goodwill Meets Better Business Bureau Standards for Charity Accountability

Goodwill Industries of Tulsa is very pleased to report that we recently completed a review of our activities by the Better Business Bureau (BBB). The BBB reviewed information and materials supplied by Goodwill Industries of Tulsa and determined that our organization meets all twenty of the BBB Standards for Charity Accountability. If you would like to learn more about the BBB Standards for Charity Accountability you can visit the BBB website at [www.bbb.org](http://www.bbb.org).



## Go Green!

### Receive Newsletters & Shopper eNews Electronically!

If you want to Go Green let us know. Email us at [info@goodwilltulsa.org](mailto:info@goodwilltulsa.org). We'll need your full name and address so we can delete you from our "mailing" list and add you to our "email" list. Otherwise, you'll continue receiving by mail.





# Where There Is A WILL, There Is A Way

This familiar proverb: "Where there is a WILL, there is a Way" emphasizes our human determination that once we set our minds on something, we will see that it happens. In our context, the word WILL has another meaning; it is one of the most common planning tools individuals associate with estate planning. Even though many of us have a general concept of what a WILL does, it has been reported that 70% of all Americans have nothing in place.

With that in mind, if you have the WILL then we have created a Way for you to do what most have not done: write your WILL. Through proper planning you can make sure that your estate



is distributed to those you care about the most. By constructing a plan, you have in turn created a Way to impact your family and finances.

We are "WILL"ing to be there for you to help you along the Way. Our free educational service is just one Way we can help keep you motivated and informed throughout the process. For more information on WILLS and estate planning or to arrange an appointment, please contact, Karla Davis at 918.581.1234 or email [kdavis@goodwilltulsa.org](mailto:kdavis@goodwilltulsa.org). Rest assured – no one's going to sell you anything and the planning advice is free; this is our Way of saying thanks for your "Good-WILL."

**Are You A  
Clothes Horse?**

**Feel Good.  
Do Good.  
Clean Out Your  
Closets for Goodwill.**

**Goodwill Industries of Tulsa, Inc.  
[www.goodwilltulsa.org](http://www.goodwilltulsa.org)**



**MARK YOUR CALENDAR  
AND PLAN TO ATTEND**

## GOODWILL'S FRUGAL FASHION WORKSHOP

**Wednesday, April 14, 2010  
12:30 p.m. - 1:30 p.m.  
Goodwill Store – 2800 Southwest Blvd.  
Tulsa**

Meet our fashion teams and let them introduce you to the In Style/Thrift connection. You will learn how to update your spring wardrobe with current style trends by adding a few fresh fashions and accessories – all on an affordable budget.

Leave with a plan that will work for you no matter your age or size. We want you to consider Goodwill your one-stop fashion store. We know that you will be pleased with the selection and value that you will find when you visit any of our stores.

Mastering the art of mixing Goodwill "Finds" with department store fashions will give you the stretch you need to dress in style at a fraction of department store prices. Bring a friend. Bring that hard to match pair of slacks. Bring your list of must have basics and discover the Goodwill Fashion Secret – How to dress in style without spending a fortune.

Watch for other fashion events in 2010, and please spread the word that Goodwill is a Fun and Fashionable shopping destination.

**Workshop attendees will be entered into a drawing for a  
Goodwill \$50 Shopping Spree!**





**DO SOME GOOD!**  
Recycle your used computer today.

**It's Free**

**It's Easy**

**It's a Good Thing**

You can recycle any brand of used computer just by dropping it off at the nearest Goodwill donation center. It's free, it's easy, and you'll not only feel good but also get a tax receipt. Who knew recycling could do so much good?

[www.reconnectpartnership.com](http://www.reconnectpartnership.com)

Neither Dell nor Goodwill accepts responsibility for data or other personal information left on a donor's hard drive or storage media.  
Copyright © 2009 Reconnect Partnership. All rights reserved.





Goodwill Industries of Tulsa, Inc.  
PO Box 9811 • Tulsa, OK • 74157-0811

PEOPLE WORKING. LIVES IMPROVED.



NON PROFIT  
ORGANIZATION  
US POSTAGE  
**PAID**  
TULSA OK  
PERMIT NO. 128



## Goodwill Stores and Donation Centers

---

### STORES\*

#### TULSA

2800 Southwest Blvd.  
102 S. Garnett  
19021 E. 51st St.

2210 W. Washington St. (91st & 145th E. Ave), **Broken Arrow**

1204 N. Lynn Riggs, **Claremore**  
3826 E. Frank Phillips, **Bartlesville**  
8525 N. 117th East Ave., **Owasso**  
715 S. George Nigh Expressway, **McAlester**  
2102 Range Line Road, Joplin, **MO**

\*For store hours, visit our Web site  
[www.goodwilltulsa.org](http://www.goodwilltulsa.org) or call **(918) 584-7291**

### DONATION CENTERS

#### TULSA

2800 Southwest Blvd./Goodwill (open 24 hours)  
102 S. Garnett/Goodwill Store  
19021 E. 51st St./Goodwill Store  
3807 S. Harvard/Storefront\*  
51st & S. Harvard/Stein Mart/Trailer  
9242-H S. Sheridan/Storefront/Sterling Plaza  
1691 S. Yale/Storefront/Seventeen Hundred Yale Mall  
6933 S. Sheridan/Storefront/Plaza Village Shopping Center  
8028 S. Yale/Storefront/Country Hollow Shopping Center  
10925 S. Memorial/Storefront/South Park Shopping Center  
8125-M East 51st St/Storefront/Memorial Park Shopping Ctr.  
Woodland Hills Mall/Trailer/Upper level parking lot

#### BIXBY

14625 S. Memorial/Storefront/River Run Shopping Ctr.

#### BROKEN ARROW

91st & 145th East Ave./Goodwill Store  
1027 N. 12th/Storefront\*/  
Kenosha Crossing Shopping Center

#### JENKS

211 W. Main St./Storefront\*

#### SAPULPA

1022 E. Taft/Storefront

#### OWASSO

8525 N. 117th East Ave./Goodwill Store

#### BARTLESVILLE

3826 E. Frank Phillips Blvd./Goodwill Store

#### CLAREMORE

1204 N. Lynn Riggs/Goodwill Store

#### McALESTER

715 S. George Nigh Expressway/Goodwill Store

#### JOPLIN

2102 Range Line Road/Goodwill Store

\*THIS LOCATION IS A FREE-STANDING BUILDING  
For donation hours or information on special  
pick-ups call: **(918) 581-1200** or visit us at  
[www.goodwilltulsa.org](http://www.goodwilltulsa.org)